



Projects Currently in Planning, Design and Construction

April 12, 2017

in Planning

Project Updates: **\$385M+** currently in Planning

- Programming, Space Planning, Site Design Review and Construction Support for Various Capital Projects
- Administrative Space Assessment – Stakeholder meetings underway
- Public Safety Space Assessment – Evaluating options
- Science 1 Building – Program validation and site planning
- UConn Stamford Student Housing – Execution of Agreements completed
- Student Health Services – Begin programming Fall 2017
- Framework Engineer for Campus Infrastructure – Various Corridors & Facilities
- Athletic Facilities Programming – Soccer, Baseball, Softball, Hockey - completed

STEM Research Center 1

- Scope: Science 1
 - 230,000+ GSF building program
- Budget: \$240M, Pre-Design phase
 - Payette Architects
 - CMr Selection Spring 2017
- Schedule:
 - Pre-Design Phase June 2017
 - Design Phase – Summer 2017 – Winter 2019
 - Construction Start Summer 2019
- Key Issues: Utility enabling projects including new Supplemental Utility Plant and Parking Garage.



Northwest Quad Development Plan

Athletic Facilities Improvements

- Pre-Design for Stadia Projects – in process with Newman Architects and RDG
 - Revised programming, site plan, floor plans, for soccer, baseball, softball & maintenance
 - Investigating options for 1 central shared facility for lockers, lounges, offices, etc.
- Design for Stadia Projects – Schematic Design to start mid-May 2017
- Survey, geotechnical, permitting, and CM selection in 2017
- Construction start targeted for 2018, schedule for all Stadia construction TBD
- Infrastructure design – in process
 - Road & utility improvements will be on parallel design and construction track
 - Duration dependent on concurrence, team schedules and use of off-site facilities
- Project budget target for Stadia TBD
- Project budget target for infrastructure approximately \$20M

Other Planning Activities

- Phased Implementation of Library Facilities Master Plan
- Space Management Policies, Guidelines & Software
- Drainage Master Plan monitoring
- Wayfinding Assessment, Recommendations and Implementation Plan
- Northeast Science Quad Programming
- South Campus Commons Programming
- Historic District Evaluation & Process
- Short-Term Capital Improvement Plan (CIP) for Parking
- Surface Parking in North Campus Technology Park
- Horsebarn Hill Road Pedestrian Safety Improvements
- Construction Mitigation Planning & Communication
- Updates to Division I Specifications, Design Guidelines & Performance Standards
- Deferred Maintenance Improvements with Facilities Operations & Building Services

Stamford Residential Housing

- Scope:

- Long-Term Master Lease of the building presently under construction at 900 Washington Blvd, Stamford
- 116 Units (Studio, 1BR and 2BR Apartments) totaling approximately 290 students
- Occupancy expected in Fall 2017



- Next Steps:

- Closing anticipated in April 2017. Operation commences in early Summer 2017
- Student housing commitments will start in April 2017
- Reviewing technology and security system extensions from Stamford campus

in Design

Project Updates: **\$550M+** currently in Design

- Fine Arts Phase II Production Addition – out to bid in April
- Gant Building Renovation – Phase I out to bid
- Student Recreation Center – out to bid
- North Eagleville Road Infrastructure, Phase IIIB – GMP under review
- Gampel Pavilion Renovation – GMP signed
- Northwood Apartments Roof Replacement – bidding complete
- Alumni Shower Renovations – out to bid
- Northwest Shower Renovations – out to bid
- Hilltop Apartments Roof Replacement – bidding complete
- ENGR II & UTEB A/C Upgrade – out to bid
- Koons Hall Renovation – out to bid
- Beanery Café Terrace at Benton – to be bid
- South Campus Commons, partial – in design
- Infrastructure Projects
 - Framework for Campus Infrastructure – BVH and CDM Engineers
 - Utility Modeling – in process
 - Student Recreation Center – out to bid
 - Soccer, Baseball & Softball Stadia – Analysis and design – In process
 - North West Science Quad, Ph I Utilities – out to bid
 - Water Pollution Control Facility Upgrades – In design
 - Central Utility Plant Chilled Water Distribution Improvements – In design

Fine Arts Phase II

- Scope: 30,600 GSF addition
 - Drama, Music and the Nate Katter Theater
 - New entry lobby and connectivity between current buildings
- Budget: \$23.5M (Construction Document phase)
- Schedule: Releasing to Bid, PLA
 - Design Drawings expected March 2017
 - Bidding in April 2017
 - Target Construction Start: July 2017
 - Target Construction Completion: Jan 2019
- Key Issues: Coordination with adjacent projects: Music Library, reroofing and flooring replacement



Fine Arts Exterior Rendering looking North

Gant Building Renovation - STEM

- Scope: 285,000 GSF Renovation
 - Teaching labs, faculty offices and support space upgrades
 - Infrastructure and Envelope Upgrades
 - Targeting LEED Gold
- Budget: \$160M – 180M Design Phase
- Schedule:
 - CDs Phase 1 Due April 2017
 - Start construction Spring 2017
 - Complete construction Fall 2022
 - Key Issues: Swing space enabling projects, space identified for IT behind Gampel



View into new Light Court

Gant Building Renovations - STEM

| Science Facilities: Project Schedule | | DRAFT | | | | | | | | | | | | September 18, 2014 (Revised 2/8/16) | | | | | | | | | | | |
|--------------------------------------|--|-------|----------|----------|--------|--------|------------|--------------|------------|------|------------|------|------|-------------------------------------|--|--|--|--|--|--|--|--|--|--|--|
| BUILDINGS | | 2013 | 2014 | 2015 | 2016 | 2017 | 2018 | 2019 | 2020 | 2021 | 2022 | 2023 | 2024 | 2025 | | | | | | | | | | | |
| GANT BUILDING COMPLEX | | | | | | | | | | | | | | | | | | | | | | | | | |
| GANT SOUTH WING & PLAZA BUILDING | | | | PLANNING | DESIGN | | RENOVATION | MOVE | | | | | | | | | | | | | | | | | |
| GANT WEST WING | | | PLANNING | DES | | DESIGN | | | RENOVATION | MOVE | | | | | | | | | | | | | | | |
| GANT NORTH WING | | | PLANNING | DES | | | | DESIGN | | | RENOVATION | MOVE | | | | | | | | | | | | | |
| SCIENCE 1: 200,000 GSF +/- | | | PLANNING | | DESIGN | | | CONSTRUCTION | | | | | | | | | | | | | | | | | |

| Science Facilities: Project Schedule | | DRAFT | | | | | | | | | | | | September 18, 2014 (Revised 10/27/16) | | | | | | | | | | | |
|--------------------------------------|--|-------|----------|----------|--------|--------|------------|--------------|------------|------|------------|------|------|---------------------------------------|--|--|--|--|--|--|--|--|--|--|--|
| BUILDINGS | | 2013 | 2014 | 2015 | 2016 | 2017 | 2018 | 2019 | 2020 | 2021 | 2022 | 2023 | 2024 | 2025 | | | | | | | | | | | |
| GANT BUILDING COMPLEX | | | | | | | | | | | | | | | | | | | | | | | | | |
| GANT SOUTH WING & PLAZA BUILDING | | | | PLANNING | DESIGN | | RENOVATION | | | | | | | | | | | | | | | | | | |
| GANT WEST WING | | | PLANNING | DES | | DESIGN | | | RENOVATION | | | | | | | | | | | | | | | | |
| GANT NORTH WING | | | PLANNING | DES | | | | DESIGN | | | RENOVATION | | | | | | | | | | | | | | |
| SCIENCE 1: 200,000 GSF +/- | | | PLANNING | | DESIGN | | | CONSTRUCTION | | | | | | | | | | | | | | | | | |

Student Recreation Center

- Scope: Student Recreation Center
 - 190,000 GSF building program
- Budget: \$100M, Design phase
 - JCJ/Moody-Nolan Architects
 - Turner Construction – CM
 - Student fee funded
- Schedule:
 - GMP due April 2017
 - Construction Start May 2017
 - Complete Construction Summer 2019
- Key Issues: Timing of enabling utility projects; budget



View from Business School Quad



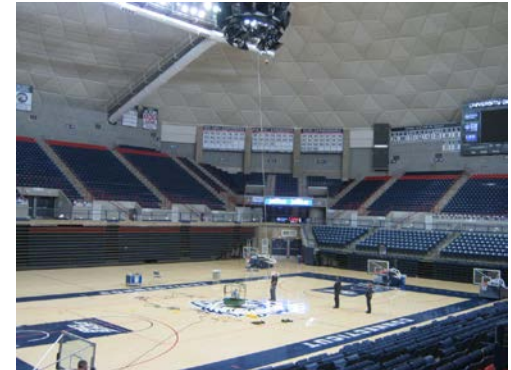
View From Fitness Center into Atrium

Gampel Dome Repair

- Scope: Gampel Dome Repair
 - Repair interior dome fabric
 - Remove and replace roof battens, seals, flashings
 - Reinforce catwalk, minor code repair
- Budget: \$10M, Construction Phase
 - Fennick McCredie Architecture
 - Downes Construction – CMr
 - GO Bonds
- Schedule:
 - Exterior mobilization - March 2017
 - Start interior work – May 8, 2017
 - Substantially complete - October 24, 2017
- Key Issues: Working 6 days a week



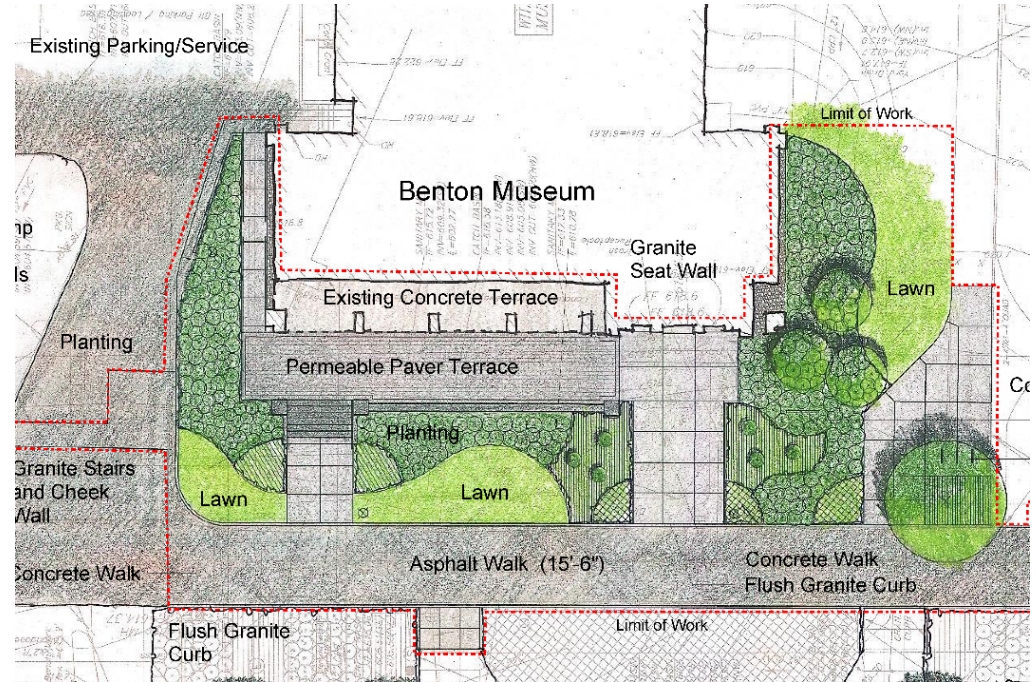
Exterior view of Gampel



Interior view of Gampel

Beanery Café Terrace at Benton Museum

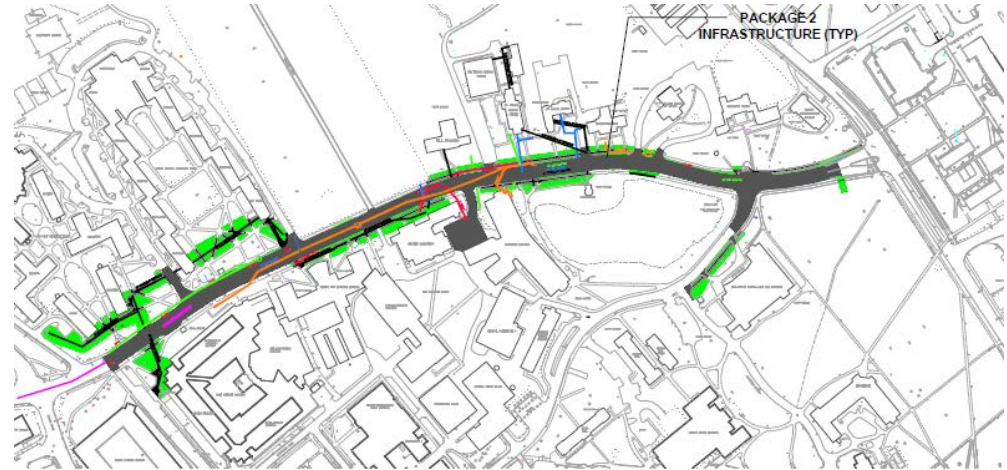
- Scope:
 - Landscape Architecture
 - Exterior improvements for circulation and accessibility
 - Expanded space for outdoor dining
- Budget:
 - \$350,000
- Schedule:
 - Construction May – Aug 2017
- Key Issues:
 - Access during construction



Site Improvement Plan

North Eagleville Road Phase IIIB Utilities

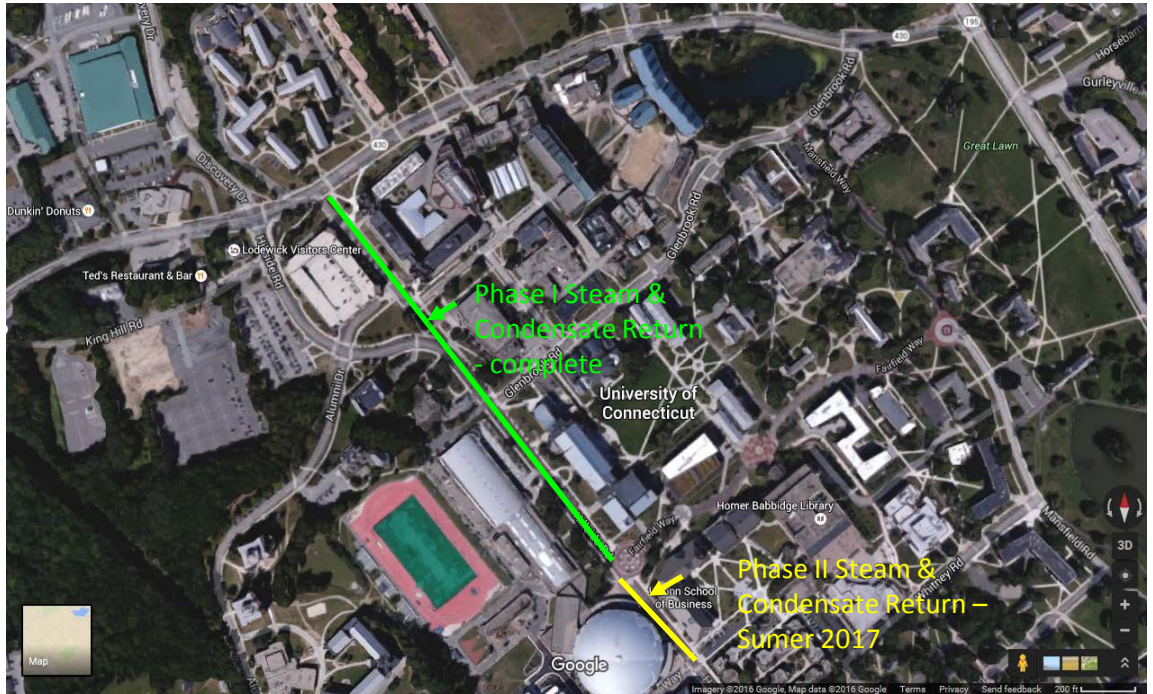
- Scope:
 - Replacement of aged Steam and Condensate lines, water lines and electrical ductbanks and sewer force main on the Northwest part of campus
- Budget: \$49M Final Phase
 - CM at Risk Project
 - Bids received – project significantly over budget
 - PLA
- Schedule:
 - Construction Start May 2017
 - Complete Construction Fall 2017



North Eagleville Road Phase IIIB Site Plan

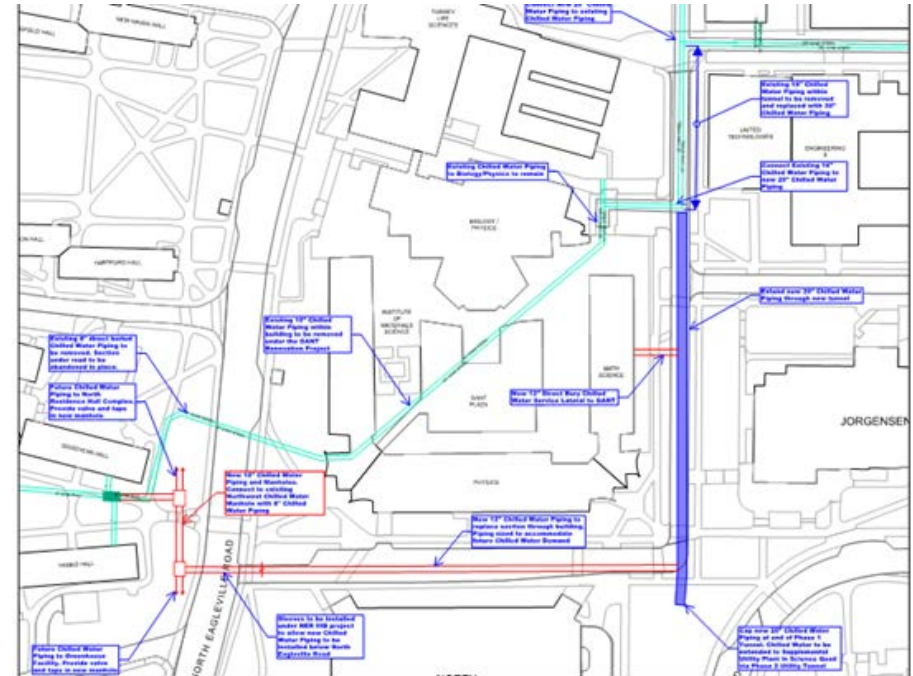
ESPC - Energy Services Performance Contract (ESCO)

- Scope:
 - Phase I Steam line from Gant to Fairfield Way - complete
 - Phase II Steam line which provides a critical connection for the Student Recreation Center. Design in progress
- Budget: \$31.6M Final Phase
- Schedule:
 - Construction Start May 2017
 - Complete Construction Fall 2017



NW Science Quad – Phase 1 Utilities

- **Scope:** Water, Reclaim, Fire, Chilled Water, Steam, Power, Teledata, Storm, and Sanitary
- **Budget:** \$20M, Design phase
 - BVH Integrated Services Engineers
 - Whiting Turner Construction – CM
 - NextGenCT Funded
- **Schedule:**
 - Construction Documents Complete
 - Project in bid phase
 - Start Construction after Graduation 2017
 - Complete Construction Spring 2018
- **Key Issues:** Coordination w/ Gant Phase 1 Schedule



Utility Tunnel Extension South of Gant

South Campus Commons

- Scope:
 - Enabling work for Student Recreation Center (staging)
 - Abatement and demolition of 3 vacant buildings
 - Temporary improvements for stabilization and pedestrian safety now; passive recreation space to follow
- Budget:
 - \$4.4M
- Schedule:
 - Abatement, demolition & stabilization Spring 2017
 - Design Fall 2017 – Summer 2018
 - Construction Fall 2018 – Summer 2019
- Key Issues:
 - Coordination
 - Construction logistics



View Looking North along Academic Way
2015-2035 Campus Master Plan

Koons Hall Renovation

- Scope:
 - Renovation of teaching lab, offices, classrooms and dry research laboratory. Provide a new HVAC system for the entire building.
- Budget: \$ 5.5 Million
 - General Contract Project
- Schedule:
 - Construction Start May 2017
 - Complete Construction August 2017



Koons Hall

Infrastructure Projects – Utility Framework

- Current studies/designs in progress to support the following:
 - Student Recreation Center – Design of Utility upgrades completed
 - North West Science Quad development – Utility Study in Progress
 - North Utility Tunnel Extension to support North West Science Quad and Gant Renovations – in bid phase
 - Supplemental Utility Plant as part of NW Science Quad Utility Study RFQ for design firms in progress.
 - Athletic Stadia redevelopment Utility Design in progress; to begin 1st Qtr 2017
 - Central Utility Plant capacities and upgrades/new facilities necessary to support campus growth based on Master Plan
 - Development of Depot/Bergin – Feasibility Study completed. Project on hold.
 - Wastewater Treatment Facility upgrades –Design in process. Design Development Completed. Construction Documents to be completed in June 2017
 - Utility Feasibility Study for EEB Greenhouses – feasibility study for preferred site in progress

Northwood Apartments Roof Replacement

- Scope:
 - Replace the roofs on 12 apartment buildings
- Budget: \$1.55 Million
 - General Contract Project
- Schedule:
 - Construction Start May 2017
 - Complete Construction August 2017



Typical Apartment Building

Alumni Shower Renovation

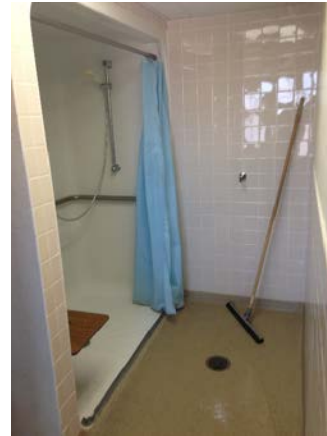
- Scope:
 - Rebuild the shower area in all the bathrooms of 4 buildings
- Budget: \$.7 Million
 - General Contract Project
- Schedule:
 - Construction Start May 2017
 - Complete Construction August 2017



Typical Shower Area

Northwest Shower Renovation

- Scope:
 - Rebuild the handicapped shower area in all the bathrooms of 6 buildings
- Budget: \$.745 Million
 - General Contract Project
- Schedule:
 - Construction Start May 2017
 - Complete Construction August 2017



Typical Shower Area

Hilltop Apartments Roof Replacement

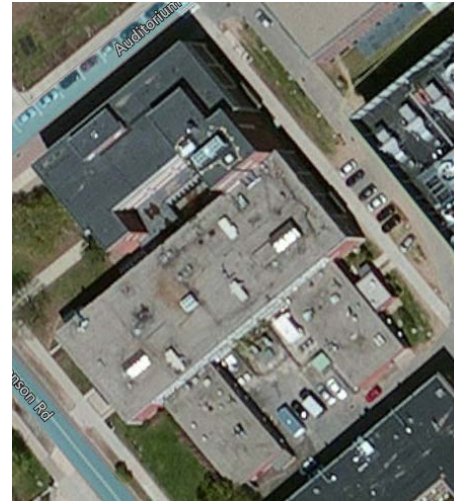
- Scope:
 - Replace the roofs on four buildings at Hilltop apartments (Woodhouse, Wheeler, Wu, Clubhouse)
- Budget: \$ 1.762 Million
 - General Contract Project
- Schedule:
 - Construction Start May 2017
 - Complete Construction August 2017



Hilltop Apartments

ENGR II & UTEB A/C Upgrade

- Scope:
 - Expand the use of air conditioning at E II & improve existing air conditioning systems in both E II and UTEB
- Budget: \$ 2.5 Million
 - General Contract Project
- Schedule:
 - Construction Start April 2017
 - Complete Construction August 2017



E II & UTEB

Completed / in Construction

Project Updates: **\$480M+** currently in construction

- Hartford Campus Relocation
- Innovation Partnership Building
- North Hillside Road (renamed Discovery Drive)
- Engineering and Science Building
- Main Accumulation Area (chemical waste transfer facility) - in closeout
- Central Campus Infrastructure

UConn Hartford

- Scope: 180,000 GSF, 5 floors
- Budget: \$140M (All components)
- Schedule:
 - Exterior substantially complete
 - Finishes on Floors 2 – 5 proceeding
 - Complete construction: August 1, 2017 for most of building (August 11 for a small portion of the building)
- Other Components:
 - Construction at 38 Prospect: April 2017
 - HPL work in final phase: June 2017
 - Move schedule: May 10 – August 17



*Construction on the Hartford Times Building
looking northwest up Arch Street*

UConn Hartford

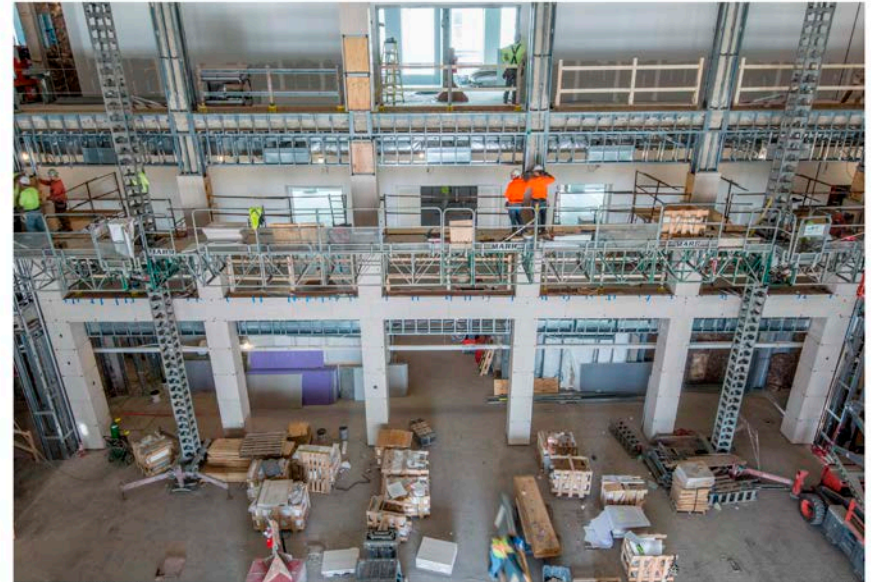


THE WHEITING-TURNER CONTRACTING CO.
UCONN DOWNTOWN HARTFORD
30 PROSPECT STREET, HARTFORD, CT
VIEW: SOUTHEAST SIDE OF SITE - NW
PHOTO:12/57/030.004 DATE: 2/21/2017

PROGRESS PHOTOGRAPH

BERNSTEIN ASSOCIATES PHOTOGRAPHERS

Construction View looking Northwest at the Hartford Times Building



THE WHEITING-TURNER CONTRACTING CO.
UCONN DOWNTOWN HARTFORD
30 PROSPECT STREET, HARTFORD, CT
VIEW: 3RD FL. CENTER OF SITE - N
PHOTO:12/57/030.043 DATE: 2/21/2017

PROGRESS PHOTOGRAPH

BERNSTEIN ASSOCIATES PHOTOGRAPHERS

Limestone installation at the Atrium columns in the Hartford Times Building

Innovation Partnership Building

- Scope: 114,000 GSF, 3 floors + Penthouse
 - Includes 25,000 SF shelled tenant lab space
 - Core Additive Manufacturing and Advanced Characterization (Imaging)
- Budget: \$162.3M, on budget
 - CM GMP project delivery
- Schedule:
 - Started construction June 2015
 - Completion of AMIC tenant fit-out May 2017
 - Completion of Main Entry Floor and Adjacent Tenant Spaces September 2017
 - Completion of ACL December 2017
- Key Issues: Requests for add'l tenant fit out for inclusion into current project budget & schedule



Innovation Partnership Building



Advanced Characterization Lab



North view of Lab Bar and Main Entrance

Innovation Partnership Building



Ceiling View of Terrace Area Below Lab Bar



Level 4 Tenant Space

Discovery Drive (formerly N. Hillside Road)

- Scope: Extension of North Hillside Rd from Charter Oak Complex entrance to Route 44
- Budget: \$20.365M, on budget
 - GC Unit Price project delivery
- Schedule: Complete except for:
 - Final Phase – Conversion of 40 acres from woodland to farmland in construction
- Key Issues: Delayed remainder of stone and root clearing to Spring 2017



Farmland Restoration in Progress

Engineering and Science

- Scope: 115,000 GSF, 5 floors & penthouse
 - HPBC, anticipate LEED Silver
- Budget: \$95M, on budget
 - CM GMP project delivery
- Schedule:
 - In Construction
 - Complete construction delayed to July 2107
- Key Issues: Curtain Wall Quality Control Issue



Engineering and Science



View of perimeter Lab Research space



Main electrical gear installed and tied in

Main Accumulation Area

- Scope:
 - The facility will handle regulated waste for the campus including:
 - Biological
 - Chemical
 - Radioactive
 - HPBC, anticipate LEED Silver
- Budget: \$5.5M on budget
 - GC Project Delivery
- Schedule:
 - In Construction Close-Out
 - Occupancy January 2017
- Key Issues: None at this time



East Elevation View of MAA Facility

Main Accumulation Area



Chemical Storage Room with Blast Panels on Exterior Wall



Office Area

Central Campus Infrastructure

- Scope: This project is the enabling project for the new Student Recreation Center including:
 - Demolition of Connecticut Commons - complete
 - Utility work including relocating telecommunications, electrical, steam and condensate return lines to Whetten
 - Extending existing utilities including electrical, chilled water, fire service and domestic water to serve the new facility
 - Demolition of 4 Brown Houses in order to create a construction lay down-area
- Budget: \$25M, PLA (partial)
- Schedule:
 - Spring 2016 – Winter 2019



Site Prep for Upcoming Building Project

Learn More

uconn.edu/construction

updc.uconn.edu



In Planning – Library Master Plan

With the adoption of the 2015 UConn Master Plan by the Board of Trustees in 2015, the Homer Babbidge Library is in a unique position to create a 21st century library that reflects UConn's academic vision and mission... [More](#)



In Design – Student Rec Facility

Design is well underway for the new three-story 191,000 square foot student recreation center slated to open in July 2019. Programming started in October 2015 with considerable input from students, staff and the Student Advisory Committee.... [More](#)



In Construction – Tech Park IPB

The Innovation Partnership Building (IPB) is an 113,700 GSF research building that will house state-of-the-art specialized equipment and instrumentation for nanofabrication, precision manufacturing, biomedical devices/sensor development, advanced modeling/simulation and material characterization... [More](#)

Recent Posts

[Summer Construction Update Video](#)

September 15, 2016

[Projects Currently in Planning, Design and Construction](#)

September 8, 2016

[Putnam Refectory Dining Facility Completion Video](#)

August 29, 2016

[Next Gen CT Dorm Completion Video](#)

August 19, 2016

[Monteith Project Completion Video](#)

August 18, 2016

Resources & Information

• [Stroms Leased Property RFEI](#) [View PDF](#)

• [Leased Space CBA](#) [View PDF](#)

• [Hotel Development](#) [View PDF](#)

• [Stamford Student House RFEI](#) [View PDF](#)

• [Proposed Disposition of the University of Connecticut Greater Hartford Campus](#) [View PDF](#)

UConn Today

SEP 20 The Big E
12:00am

SEP 20 USG Funding Workshop
8:00am

SEP 20 Academic Achievement Center Workshops
9:00am

[All Events](#) [View PDF](#)

About UPDC

In support of UConn's strategic vision, University Planning, Design and Construction coordinates integrated, responsive planning for the University's physical environment.

We will provide proactive, professionally managed leadership to plan and implement quality, cost-effective, long and short-term facility solutions that enhance the mission of the University, embrace our partnership with our community, and ensure proper

University Planning, Design and Construction
31 LaCoyt Rd, Unit 3033
Storrs, Connecticut 06269-3033

PHONE: (860) 486-2776

[Webmaster Login](#)
[UPDC Internal](#)



© University of Connecticut
Disclaimers, Privacy & Copyright